

OPERATING INSTRUCTIONS

JVC INSTALLATION MANUAL

VIDEO INPUT UNIT FOR A JVC PLASMA DISPLAY MONITOR

IF-C422P1G Video Input Unit

SAFETY PRECAUTIONS

- This installation requires technical skills and electrical acknowledgment. It is very dangerous to install this kit by yourself. For installation, consult JVC authorized dealer.
- Some of the parts, such as rear panel and blank panel, are very heavy and have keen edges. Be careful when handling them.

This Video Input unit allows the Plasma Display Monitor GM-P420PCE and GM-P421PCE to cope with video signals — Video (composite), S-video(Y/C), and Component/RGB — and audio signals.

Preparation

Tools: Plus (+) screwdriver

Work table: Prepare a table with a flat surface 105 cm x 65 cm or wider, and place a suitable cushion or soft cloth on it.

INSTALLATION

1 Turn off the power of the Plasma Display Monitor and then disconnect the power cord.

2 Remove the blank panel of the Plasma Display Monitor.

- 1) Place the Plasma Display Monitor upside down (with the screen faced downward) on the work table gently.

Note:

Be careful not to get the screen glass scratched or damaged.

- 2) Unscrew the 4 screws (① to ④) indicated in the illustration (Fig. 1) to detach the blank panel of the Plasma Display Monitor.

Note:

This removed blank panel is not used when printed board ass'y is installed. Retain all the screws for later use.

3 Install the Video Input Unit.

- 1) There are two connectors on the inner surface of the Video Input Unit. By aligning these two connectors with the connectors inside the monitor, push the Video Input Unit so that the connectors are fully connected.
- 2) Fix the Video Input Unit with the 4 screws removed in step 2 (① to ④) (Fig. 3).

4 Operate the Plasma Display Monitor.

After the Video Input Unit is installed, operate the monitor and check that image and sound are reproduced correctly through the following inputs: VIDEO A, VIDEO B, and COMPONENT/RGB terminals.

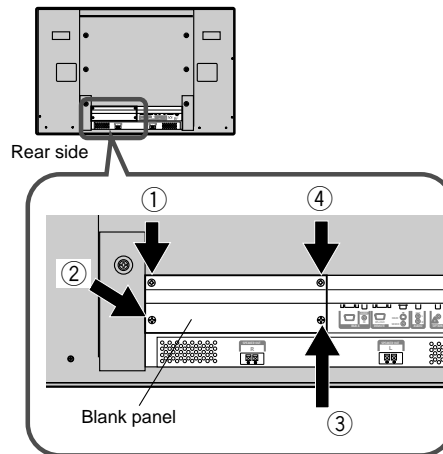


Fig. 1

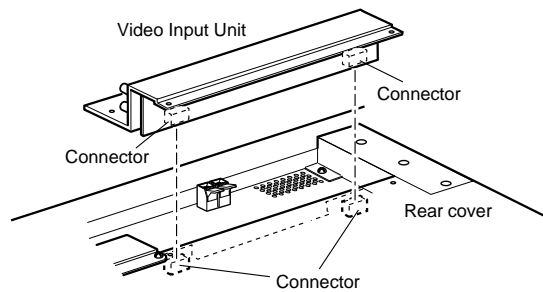


Fig. 2

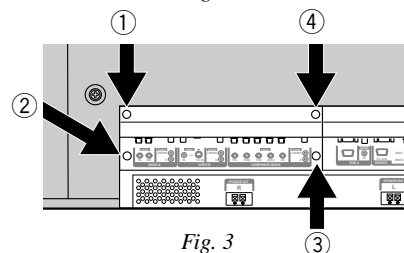


Fig. 3